

# RIVERHOMES

Ferry Lane  
Brentford TW8

£400,000  
Leasehold



A beautifully refurbished two-bedroom apartment set within the sought-after riverside development of Ferry Quays, overlooking the River Thames in Brentford. A sleek, semi-open plan kitchen sits alongside, fully integrated, and thoughtfully designed for everyday living and entertaining. The principal bedroom includes a contemporary en-suite bathroom, while a second well-proportioned double bedroom is served by a separate shower room. Residents benefit from off-street parking, on-site portorage and a selection of restaurants and bars.

ENERGY PERFORMANCE CERTIFICATE

| Score | Energy rating | Current | Potential |
|-------|---------------|---------|-----------|
| 92+   | A             |         |           |
| 81-91 | B             |         |           |
| 69-80 | C             | 78 C    | 78 C      |
| 55-68 | D             |         |           |
| 39-54 | E             |         |           |
| 21-38 | F             |         |           |
| 1-20  | G             |         |           |

KEY INFORMATION

- Local authority:

London Borough of Hounslow
- Internal area:

872 sq. ft. / 81 sq. m.
- No. of bedrooms:

2
- Council tax:

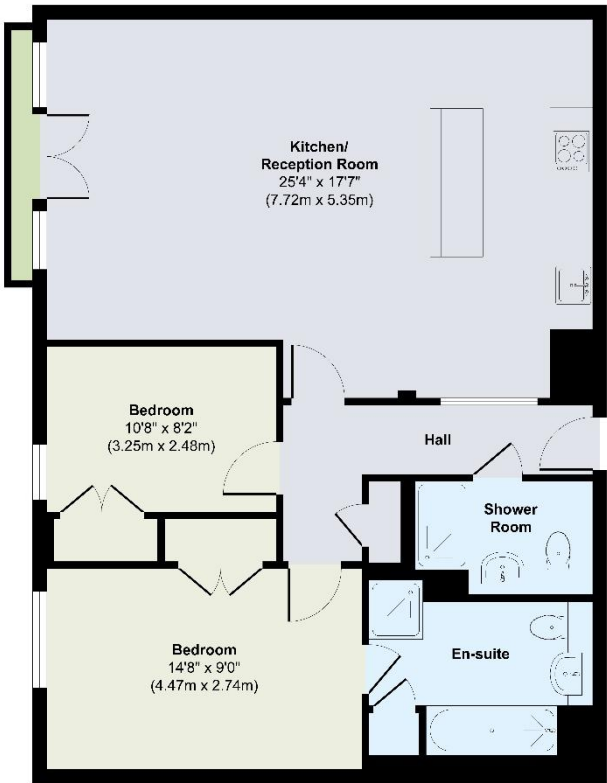
F - £3,012.85 per annum approx.
- Lease length:

100 years remaining approx.
- Service charge:

£3,800 per annum approx.
- Estate charge:

£1,200 per annum approx.
- Ground rent:

£450 per annum approx.



First Floor

